

# ■ **Walt Disney's Comics and Stories – Vol. 2 No. 5** **(February 1942)**

## **Summary of Observations**

This issue presents as a **strong, well-preserved early-1940s copy**, with both covers present, a **notably solid spine**, and **bright, well-retained color** on both the exterior and interior pages. When the **spine, centerfold, and staple photographs are reviewed together**, the book is confirmed to retain **both original staples**, which remain firmly seated and structurally functional. **Staple metal shows little to no oxidation**, an uncommon positive trait for a February 1942 publication and a clear indicator of favorable storage conditions over time.

Interior page color remains vivid, and **paper oxidation is relatively mild** compared to other early Volume 2 issues. The interior pages remain fully attached with no structural compromise. **Minor interior edge defects are present**, but they are localized and do not affect the fold or binding. The principal defect outside normal age wear is **localized staining on the back cover**, which does not migrate through to the interior.

Overall, this copy reflects **above-average preservation for wartime-era Walt Disney's Comics and Stories**, fully consistent with your observation of a good spine and strong color.

---

## **Front Cover — Observations (IMG\_1220)**

*Walt Disney's Comics and Stories – Vol. 2 No. 5 (February 1942)*

### **Photo Condition & Quality**

Clear, high-resolution image showing the full cover, all edges, corners, and spine.

### **Scene & Composition**

Donald Duck sleds downhill wearing a red knit cap and scarf, with Huey, Dewey, and Louie sliding behind him. Masthead reads *Walt Disney's Comics and Stories* with issue text **February 1942 – Vol. 2 No. 5 – 10¢**.



## Findings

- **Slight spine roll**, shallow and uniform, without splitting or material loss.
- **Minor edge wear** along the top and bottom margins.
- **Corner rounding**, light and consistent with handling.
- **Surface abrasion**, minimal and most noticeable in lighter background areas.

## Color & Printing Quality

Colors remain bright and well-saturated; black linework is crisp.

## Paper & Structural Notes

Cover remains firmly attached; no cover separation observed.

## Overall Impression

Front cover is **structurally sound and visually strong**, with only minor age-related wear.

---

## Back Cover — Observations (IMG\_1221)

*Walt Disney's Comics and Stories – Vol. 2 No. 5 (February 1942)*

## Photo Condition & Quality

Clear image showing the full back cover and subscription form.

## Scene & Composition

Subscription advertisement featuring Donald Duck and winter imagery, encouraging holiday and gift subscriptions.

## Findings

- **Localized staining/discoloration** in the upper and side areas of the back cover.
- **Light surface soiling**.
- **Minor edge wear** along the bottom margin.
- **Corner rounding**, shallow.

## Color & Printing Quality

Colors remain legible though slightly muted where staining is present.

## Paper Condition

Uniform oxidation with staining limited to the back cover only.

**DID YOU  
FORGET  
SOMEONE  
AT CHRISTMAS TIME?**

**IT'S NOT TOO LATE TO  
SUBSCRIBE  
NOW!**

**12 ISSUES OF  
WALT DISNEY'S COMIC AND STORIES \$1.00**

**64 PAGES IN FULL COLOR**

**CLEAN  
INSTRUCTIVE  
ENTERTAINING**

Was it a niece, a nephew, your friend's child, or the youngster next door? Never mind—send in your order now, and we will start the subscriptions with the January issue, if you desire. Use the handy order blanks below.

**Please send WALT DISNEY'S COMICS AND STORIES and the GIFT CARD to:**

Name _____ Address _____ City and State _____ Gift Card to Read from: _____ Check here for January issue <input type="checkbox"/> <small>DF</small>	Name _____ Address _____ City and State _____ Gift Card to Read from: _____ Check here for January issue <input type="checkbox"/> <small>DF</small>
Name _____ Address _____ City and State _____ Gift Card to Read from: _____ Check here for January issue <input type="checkbox"/> <small>DF</small>	THESE SUBSCRIPTIONS PRESENTED BY Name _____ Address _____ City and State _____ Enclosed is \$ _____ as payment in full <small>DF</small>

**Mail to K. K. PUBLICATIONS, Inc. POUGHKEEPSIE, N. Y.**

## Overall Impression

Back cover remains intact; **staining is the primary defect** on this surface.

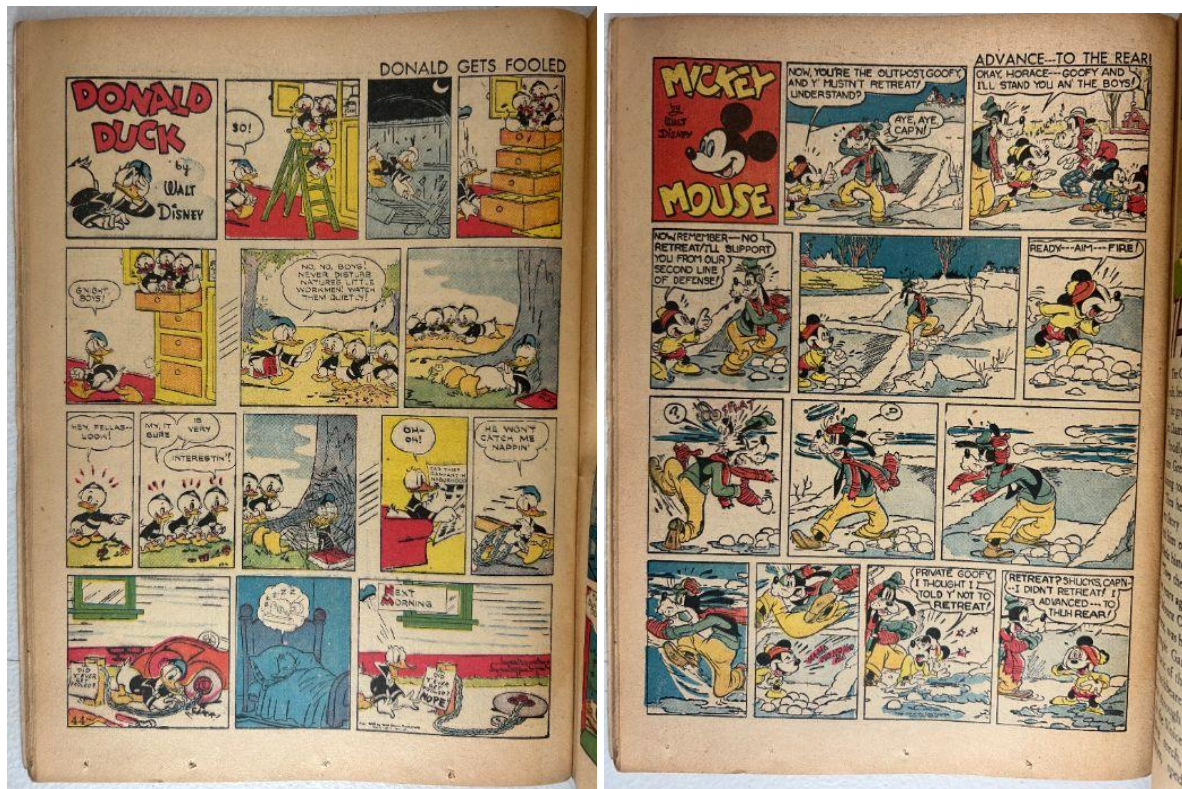
# Interior Pages — Observations (IMG\_1222, IMG\_1223, IMG\_1225, IMG\_1226)

Walt Disney's Comics and Stories – Vol. 2 No. 5 (February 1942)

## Photo Condition & Quality

Interior pages photographed clearly with full margins and gutters visible.





## Page Color

Cream to light tan, lighter than typical for early-1940s Dell newsprint.

## Findings

- **Minor interior edge tears present on at least one page**, confined to the outer margin and measuring approximately **5–7 mm**.
- **Corner creasing**, light, primarily at lower corners.
- Very limited margin foxing relative to age.

## Color & Printing Quality

Interior colors are **strong and vibrant**, better preserved than average for the period.

## Structural Notes

All interior pages remain firmly attached at both staples.

## Overall Impression

Interior pages show **excellent color retention and only minor localized defects**.

# Centerfold — Observations (IMG\_1224)

Walt Disney's Comics and Stories – Vol. 2 No. 5 (February 1942)

## Photo Condition & Quality

Clear two-page image showing fold and staple alignment.



## Findings

- **Both original staples visible and seated.**
- Fold shows slight age darkening but **no tearing or separation.**

## Overall Impression

Centerfold is **secure and structurally intact.**

---

## Spine — Observations (IMG\_1227)

*Walt Disney's Comics and Stories – Vol. 2 No. 5 (February 1942)*

## Photo Condition & Quality

Side-profile image clearly showing spine thickness and alignment.



## Findings

- **Spine remains straight and intact**, with only slight roll.
- **Minimal spine wear** at staple contact areas.
- No splitting, tearing, or paper loss observed.

## Overall Impression

For a 1942 issue, the spine condition is **notably strong.**

---

# Upper Staple — Observations (IMG\_1228)

*Walt Disney's Comics and Stories – Vol. 2 No. 5 (February 1942)*

## Photo Condition & Quality

Clear macro image of the upper staple.



## Findings

- **Upper staple present and intact.**
- **Little to no visible oxidation**, uncommon for the period.
- Surrounding paper shows only light compression.

## Overall Impression

Upper staple is **clean and structurally sound**.

# Lower Staple — Observations (IMG\_1229)

*Walt Disney's Comics and Stories – Vol. 2 No. 5 (February 1942)*

## Photo Condition & Quality

Clear macro image of the lower staple.



## Findings

- **Lower staple present and intact.**
- **No significant oxidation visible.**
- Surrounding paper remains firm.

## Overall Impression

Lower staple remains fully functional and well-preserved.

# Brittleness Test — Observations (IMG\_1230)

*Walt Disney's Comics and Stories – Vol. 2 No. 5 (February 1942)*

## Photo Condition & Quality

Clear macro image showing page-corner flex.



## Findings

Paper flexes smoothly with some stiffness but **no cracking or flaking**.

## Overall Impression

Paper shows mild age stiffening but is **not brittle**.